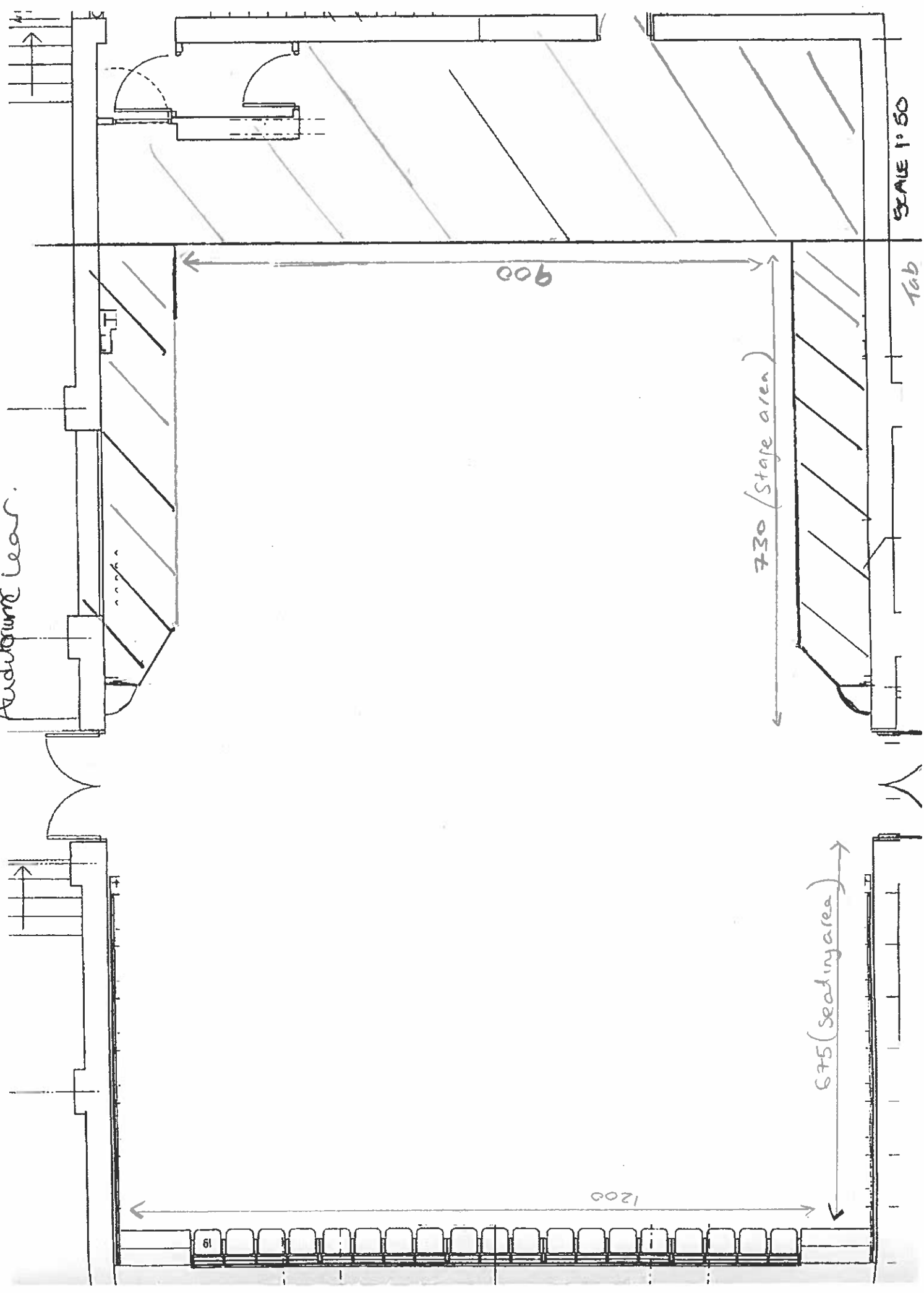


Electric Theatre Floor Plan
Auditorium Seat.



SCALE 1:50

Tab

900

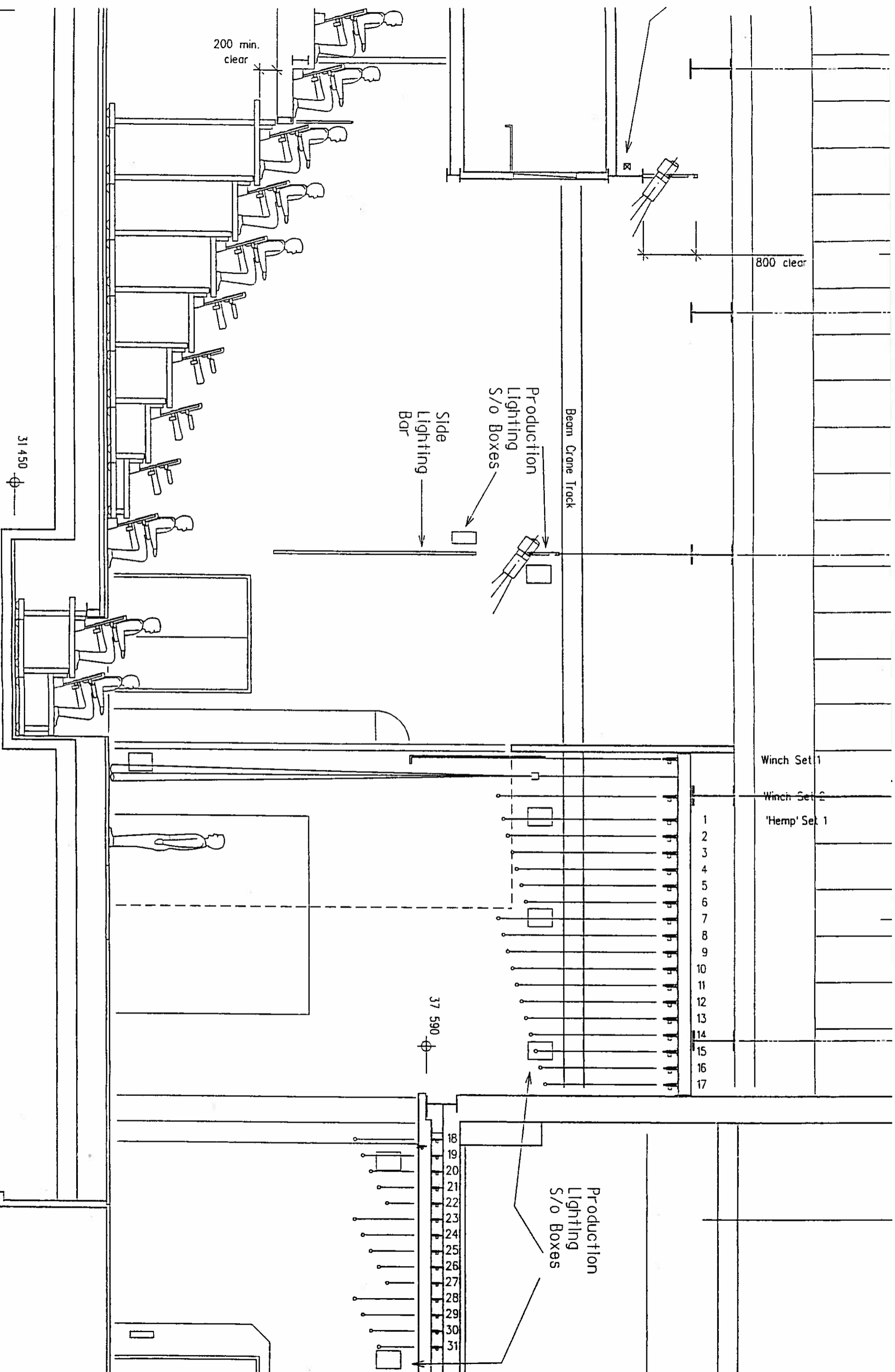
730 (Stage area)

675 (Seating area)

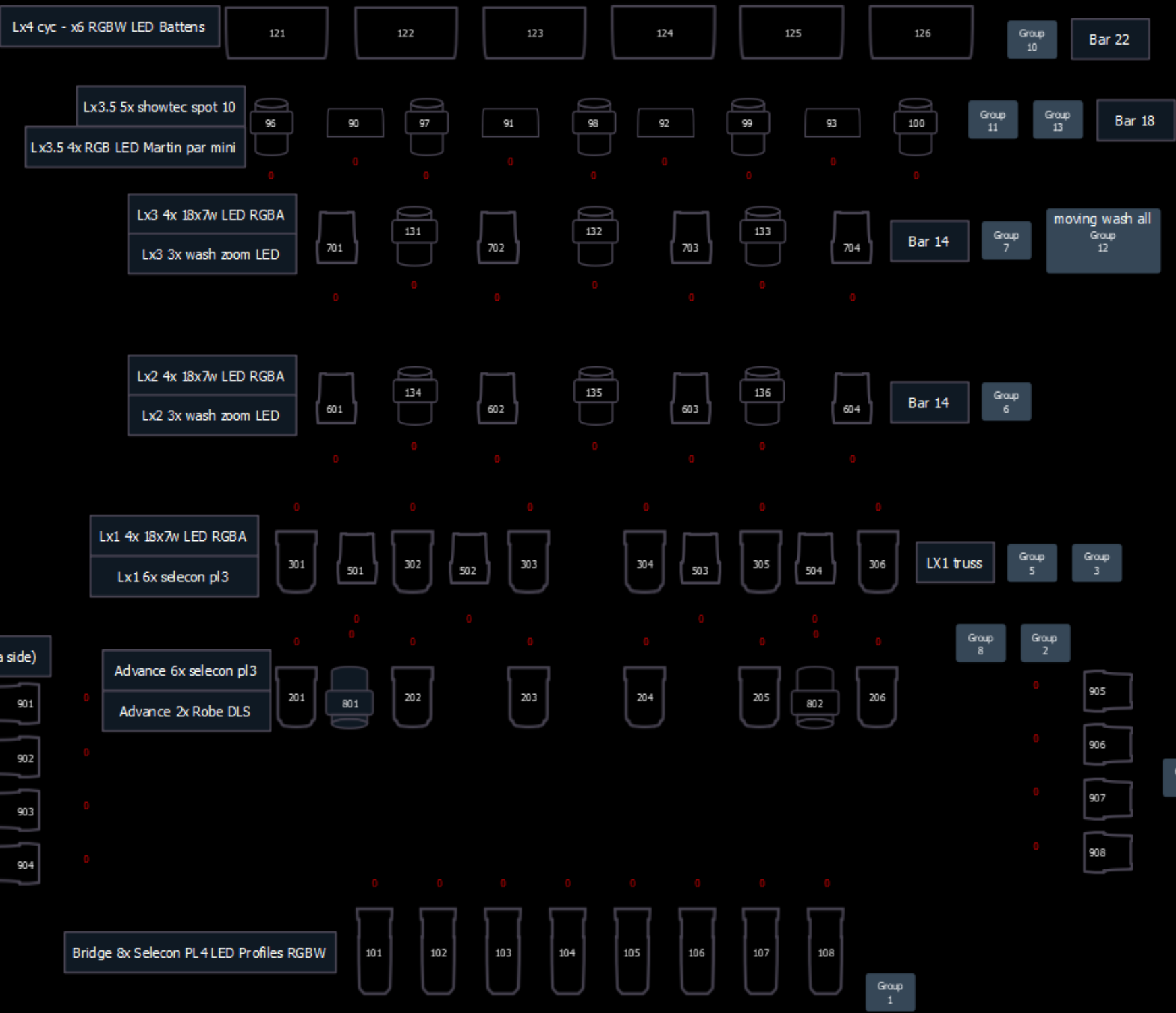
1200

61

185 nom. offsel
rom fundamental
s.o.p.



SCALE 1:50



side perch 8x lanta Fireball LED RGB (4 a side)

- 901
- 902
- 903
- 904

Advance 6x selecon pl3
Advance 2x Robe DLS

- 201
- 801
- 202
- 203
- 204
- 205
- 802
- 206

Bridge 8x Selecon PL4 LED Profiles RGBW

- 101
- 102
- 103
- 104
- 105
- 106
- 107
- 108

Group 1

Group 8 Group 2

- 905
- 906
- 907
- 908

Group 9

Lx1 4x 18x7w LED RGBA
Lx1 6x selecon pl3

- 301
- 501
- 302
- 502
- 303
- 304
- 503
- 305
- 504
- 306

LX1 truss

Group 5 Group 3

Lx2 4x 18x7w LED RGBA
Lx2 3x wash zoom LED

- 601
- 134
- 602
- 135
- 603
- 136
- 604

Bar 14

Group 6

Lx3 4x 18x7w LED RGBA
Lx3 3x wash zoom LED

- 701
- 131
- 702
- 132
- 703
- 133
- 704

Bar 14

Group 7

moving wash all
Group 12

Lx3.5 4x RGB LED Martin par mini

- 96
- 90
- 97
- 91
- 98
- 92
- 99
- 93
- 100

Group 11

Group 13

Bar 18

The Electric Theatre Technical Specifications

1.	Audience Capacity	Balcony, bleacher and orchestra pit (as seating)	210
		with orchestra pit in use / covered	180
	Steward/Usher Seats	Maximum of	3
	Wheelchair spaces	Some seats in the front row of the bleacher units (row C) may be removed for up to six wheelchair users (one wheelchair takes out two seats.)	
2.	Auditorium	Normal use of Theatre is as a single tier of seats facing a proscenium arch formed by folding doors and an adjustable height pelmet. With the seating retracted and proscenium doors folded back a flat floor hall is formed.	
		Fixed stage edge to balcony front	11.80m
		Fixed stage edge to back wall	10.10m
		Clear length of flat floor 'hall', inc. stage	21.90m
		Width between walls	12.20m
		Width between proscenium doors folded out	10.90m
		Height-floor to side ceiling	9.30m
3.	Orchestra Pit	Front two rows retract under fixed floor to provide facilities for an orchestra pit.	
		Orchestra pit - total area	14.40m.sq
		Orchestra rail to stage edge	1.80m
		Max depth of pit below stage	1.40m
4.	Stage Proscenium:	width with doors set in	7.20m
		width with doors out	10.90m
		height (structural)	6.00m
		height (visual) adjustable down to	4.50m
		Depth from stage edge:	
		to upstage entrance lobby	9.00m
		to back wall	10.40m
		Width between stage walls	12.20m
		height - bar flying downstage	8.10m
		bar flying upstage	4.30m
		Overall area	118m.sq
		Advance and LX1 bars on electric chain hoists, Capacity	250kg
		Flying adjustable pelmet on hand winch	
		31 handline sets, capacity (Cinema screen dead hung on bar 12 – not available for use.)	150kg
		distance between bars	0.25m
bar length (including extensions)	9.00m		
	Rostra	11 - 2.4 x 1.2m (8x4) & 2 - 1.2 x 1.2m (4x4) Adjustable to four heights - 7",12",18",24" designed to be compatible with 'Steeldeck' staging sections	
	Floor	flat and level - tongue and groove maple, semi-sprung Quantity of 'Harlequin' dance floor double sided black / dove grey	

	Get-in	tailboard height in private yard into stage right wing width 2.90m height 3.00m
5.	Scene store	None
5.		
6.	Lighting	Control room in rear of auditorium above fixed balcony. Alternative position in back of stalls.
	Control system	ETC Ion Xe20, 2 universes
	Dimmed channels	48 @ Chilli Pro Bypass (2 x 2410i Bypass Cabinet + RCD) 3 no. Strand Act 6 dimmers (installed in rack USR).
	Projection	Christie DHD 951Q 8500LMHD (fixed position, rear of stage) Variety of screens for front and rear projection
	Lighting equipment	8 no. Selecon PL4 LED profiles (bridge position) RGBW 12 no. Selecon PL3 LED fresnels (advance and LX1) RGBW 12 no. Chauvet ColorDash Quad 18 LED pars RGBA (LX 1 / 2 / 3) 6 no Chauvet ColorDash Quad 12 LED battens RGBA (CYC) 6 no. Cantata 11/26 2 no. Cantata 18/32 12 no. Cantata F 14 no. Prelude F 8 no Prelude 16/30 profiles 6 no. 19 dg source 4 profiles 2 no. 25/50 source 4 zoom profiles 12 no. par 64/ CP62 parcans 8 no par 64 LED RGB parcans 6 no Par-56 MFL 6 no Coda 500/4 2 no Nocturn 500w floods 2 no 700w MSR RJ'Foxie' Followspots 2 no Robe Robin DLS moving head fixtures (Extra charge for use) 5 no Showtec Kanjo spot 10 moving head (extra charge for use) 6 no Hero wash 712 Z moving heads (Extra charge for use)
	Please note that occasionally lighting equipment is taken out of service for repair / maintenance. We cannot guarantee that all equipment is available at all times. Please check availability. This also applies to sound and effects equipment (speakers, amps, smoke, haze etc)	
	Haze Machine	1 no Unique hazer – DMX control (Charge for use of haze)
7.	Sound	Control position in control room or at the back of the auditorium, 32 Microphone lines (distributed DSL/DSR/USR/USL/Orchestra pit) 16 Loudspeaker lines (distributed as above) 8 amp return lines (DSL)
	Vocal mic -	5 x SM 58
	Instrument mic -	4 x SM 57
	Float mic -	3 x Audio Technica AT835B rifle mics 3 x Sennheiser K6/ ME67 rifle mics 4x Active Di box Shure Drum Kit mic set 10 x boom mic stands 2 x short boom stands
	Mixing desk	Soundcraft Si Expression 3 – 32 channel digital desk Soundcraft mini stage box - 32 channel in 12 out
	Outboard	5 x QSC stereo power amplifiers
	Loudspeakers	HK Contour flown array – active system with 4 x 18 inch subs. 4 x Renkus Heinz Qube Q12 300w speakers FoH 2 x Electrovoice Sx200 foldback/effects speakers 2 x HK Premium PR:O active Sub 18 inch 600w 2 x HK Premium PR:O active monitors/tops 15 inch 600w
	Communications	Full facilities on SM desk includes single-channel intercom by Metro Audio, 8-station cue light system, show relay and paging system
	Radios	4 x icom 2 way radios
	Assisted listening	Sennheiser infra-red system in Auditorium

8	Backstage	
	Power availability	2 x 63a/3ph 1 x 32a/3ph 16a/1ph available on distro 13a DSL / R, USL / R
	Dressing rooms	2 on first floor fitted out, each for 8 to 12.
	Toilet and showers	ensuite to each dressing room
	Video system	Relaying stage to dressing rooms and Bar