

The Electric Theatre

5TH APRIL | Rob Auton



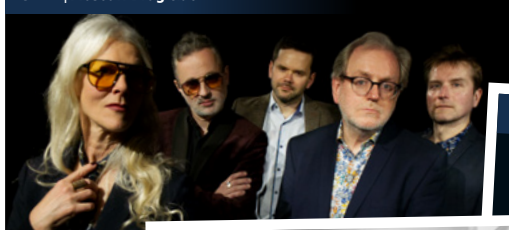
21ST MARCH | Irene Serra and Luca Boscagin



26TH APRIL | Christine Bovill



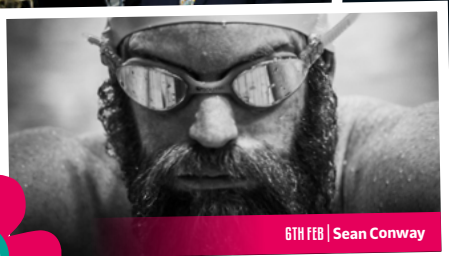
13TH FEB | Moscow Drug Club



17TH FEB | The Great Baldini



6TH FEB | Sean Conway



SPRING 2025



**WIFI IS FREE
TO VISITORS!**

ELECTRIC THEATRE CAFÉ/BAR

Come and relax by the River Wey in The Circuit Bar, a great place to meet friends and have a break from Guildford town centre.

We have recently re-opened our café in the daytime and offer a selection of sandwiches, salads and pastries.

We are proud to support local companies with a range of ciders/beers supplied by Firebird Brewery and Hogs Back Brewery and Gins from Silent Pool Gin.

Our Electric Theatre Family Café is open from 10am to 3pm Monday to Friday for a selection of sandwiches, pastries and smoothies.

Our Circuit Bar is open 1 hour before performances /events.



OPENING HOURS

ELECTRIC THEATRE / ACM FAMILY CAFÉ

Mon to Fri – 10am to 3pm

THE CIRCUIT BAR

Show days - 1 hour
prior to showtime

**THINKING OF ORGANISING AN EVENT? YOU CAN HIRE THE CIRCUIT BAR AND
RIVERSIDE TERRACE TO SUIT YOUR EVERY NEED! VISIT OUR WEBSITE FOR MORE INFO.**



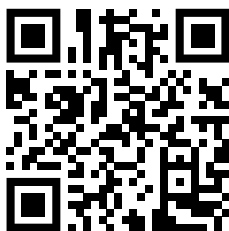
WELCOME!

Yes, this is the Spring Brochure. Yes, you are probably reading this in a non-Spring month. Yes, let's just look forward to Spring. Have a gander through the pages of our brochure to see if anything grabs you.

For further information on all of our shows check out www.electric.theatre or call for a chat on **01483 501200**.

Alternatively give the QR code a scan which will take you through to our events pages.

We look forward to welcoming you soon,
Nate and The Electric Theatre Team



**SCAN THE QR CODE
FOR ALL OUR EVENTS**

**SCAN BELOW FOR
JULIE'S BOOKS**

JULIE BUCKINGHAM



THEY WALKED INTO DARKNESS

They Walked Into Darkness is based on the Cherokee Indian 'Trail of Tears', a grueling 1,000 mile forced march to Indian Territory in Oklahoma in 1838. It tells of a teenage Cherokee girl named Ellie Sheldon Starr. Her people are rounded up by Government troops and forced to walk in the snow to a 'promised' new land. It tells of Ellie's escapades in the empty wilderness, her love for a young soldier and a near rape at the hands of another soldier.

For the civilised non-savage Cherokee people this forced journey meant death, sorrow, hunger, exposure and humiliation. They had to deal with living out in the open, experiencing attacks by wild animals. There are no doctors, only a medicine man who does his best to administer first aid with his healing herbs. All around Ellie many Indians begin to die – the young and the old. One by one Ellie loses her family. Then, when she learns she is pregnant, she begins to fall ill herself...



NOW THE MOON SHALL SEE THEM

This entertaining story is set in 2017. Special policeman Karl Silverman travels to Abu Dhabi in the UAE to rescue two girls kidnapped outside a London nightclub by a fiendish, greedy, Middle Eastern business tycoon. Karl has a plan to rescue the girls and bring the man to justice, but it will only work if a Bedouin leader and his beautiful daughter help him. And one of the kidnapped girls is not

who she appears to be...

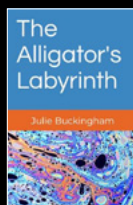


WIND TIGER

High in the Himalayas things are not what they seem in a remote Tibetan monastery. Special policeman Karl Silverman, is sent there to investigate for his department, whilst also helping a young lady who is searching the barren landscape for her missing sister, who is part of a team of conservationists hunting for an elusive snow leopard.

Karl is after smuggled diamonds, but his girlfriend, with worry on her mind, has other ideas, and falls into terrible danger at the hands of one of the gang whom Karl is chasing...

Wind Tiger has a hero - a Himalayan owl, affectionately known as Suji by the monks, who aid's Karl in the nick of time. Find out how she helps him in this engrossing story.



THE ALLIGATOR'S LABYRINTH

Step into The Alligator's Labyrinth and find out why the children of planet Deitto need urgent help from psychic Janella Black, who with her newly-wedded husband and his 'invisible' friends, must fight like avatars to save their planet from the Lize-nards, but there are traitor's in both camps. Janella learns many astonishing secrets about her past lives, as well as

her present one, and soon has to face a moral dilemma - or be crushed by it.

WED 22ND - SAT 25 JAN | The Woman in White

QUICK FANTASTIC
PRESENTS

THE WOMAN IN WHITE

splintering heart

the marillion experience

SAT 18TH JAN | Splintering Heart: The Marillion Experience

JANUARY 2025

SAT 18TH | 7:30PM

Splintering Heart: The Marillion Experience
(Tribute Band)

WED 22ND - SAT 25TH | 7:30PM
THU/SAT MATINEE | 2:30PM

Quick Fantastic presents Andrew Lloyd
Webber's **'The Woman In White'**
(Musical Theatre)

SUN 26TH

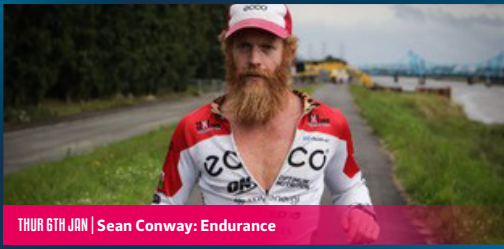
ACM Open Day

FRI 31ST | 7:30PM

The Elio Rojas Trio (Jazz)



FRI 31ST JAN | The Elio Rojas Trio



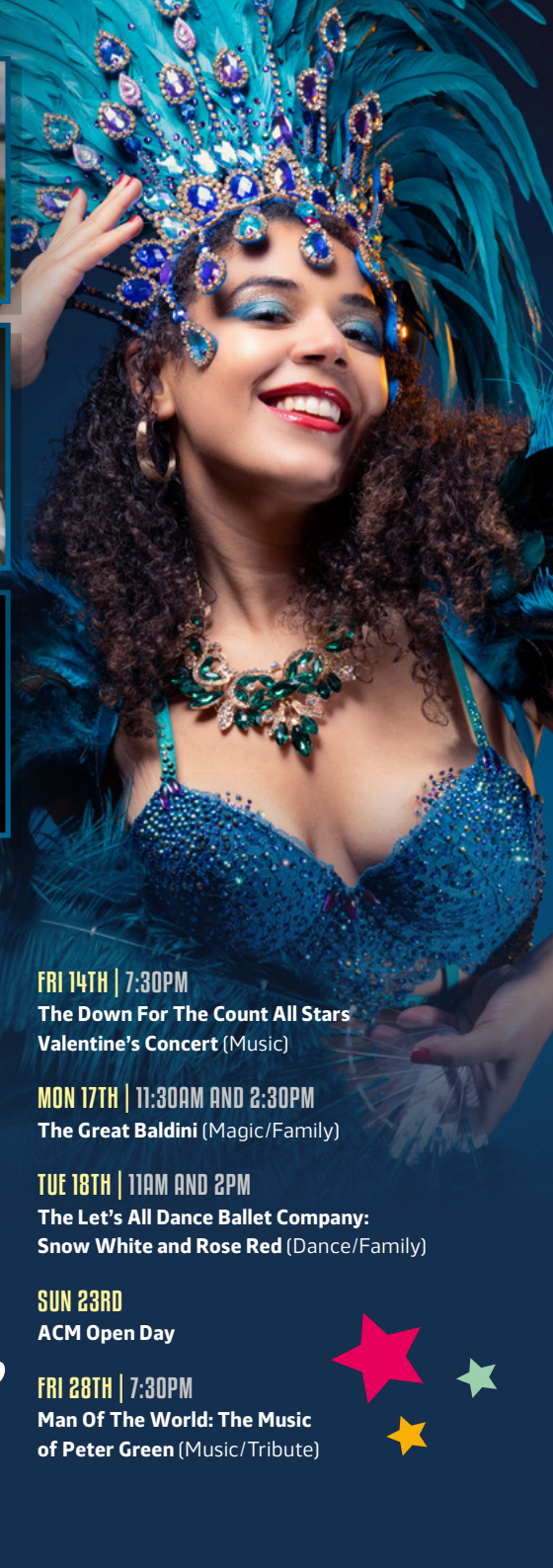
THUR 6TH JAN | Sean Conway: Endurance



FRI 7TH JAN | Mario Bakuna and Roberto Manzin



THUR 13TH FEB | Moscow Drug Club



FEBRUARY 2025

THUR 6TH | 7:30PM

Speakers From The Edge present
Sean Conway: Endurance (Talk)

FRI 7TH | 7:30PM

Mario Bakuna and Roberto Manzin
present A Tribute to Stan Getz and
João Gilberto (Jazz)

SAT 8TH | 3PM

Hundred Watt Club Burlesque Workshop

SAT 8TH | 8PM

Hundred Watt Club Show

THUR 13TH | 8PM

Moscow Drug Club (Music)

FRI 14TH | 7:30PM

The Down For The Count All Stars
Valentine's Concert (Music)

MON 17TH | 11:30AM AND 2:30PM

The Great Baldini (Magic/Family)

TUE 18TH | 11AM AND 2PM

The Let's All Dance Ballet Company:
Snow White and Rose Red (Dance/Family)

SUN 23RD

ACM Open Day

FRI 28TH | 7:30PM

Man Of The World: The Music
of Peter Green (Music/Tribute)



A woman with red hair and blue eyes, wearing a white dress, stands in front of a dark, ornate mirror. A large, stylized red blood splatter effect is visible behind her, extending across the background. The background is a dark, cloudy sky.

THE PICTURE OF DORIAN GRAY

BOX TALE SOUP | SUN 30TH MARCH | 7.30PM



SAT 1ST MAR | ZZ Top



FRI 7TH MAR | Edison Herbert Quartet



SUN 2ND MAR | Alice Armstrong



SAT 22ND MAR | Simon Evans



SUN 9TH MAR | Hari Budha Magar



WED 26TH - SAT 29 MAR | Everyman | Guildburys Theatre Co.

MARCH 2025

SAT 1ST | 7:30PM

ZZ Toppd (Tribute Band)

SUN 2ND

ACM Guitar Summit

SUN 2ND | 7:30PM

Alice Armstrong (Blues)

FRI 7TH | 7:30PM

The Edison Herbert Quartet

SAT 8TH | 2PM

Crafty Fools (Family Theatre)

SAT 8TH | 7:30PM

The Gary Fletcher Band (Music)

SUN 9TH | 7:30PM

Speakers From The Edge present
Hari Budha Magar: No Legs No Limits (Talk)

FRI 14TH | 7:30PM

Music, Mayhem and a Mezzo (Music/Cabaret)

SAT 15TH | 7:30PM

In Other Words (Play)

SUN 16TH

ACM Open Day

WED 20TH | 7:30PM

Lesley Carver: An Evening of Clairvoyance

FRI 21ST | 7:30PM

Irene Serra and Luca Boscagin:
The Great British Songbook (Jazz)

SAT 22ND | 7:30PM

Simon Evans: Have We Met? (Comedy)

WED 26TH - FRI 28TH | 7:45PM

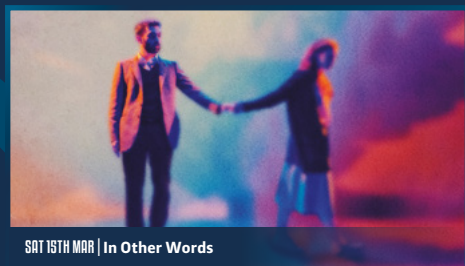
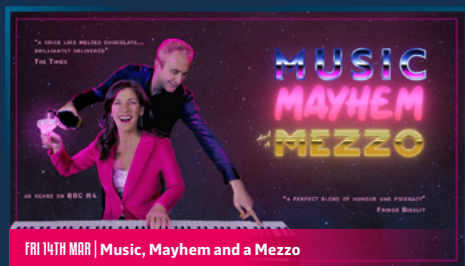
SAT 29TH MARCH | 3:30PM

Everyman presented by
Guildburys Theatre Company (Play)

SUN 30TH | 7:30PM

The Picture of Dorian Gray
by **Box Tale Soup** (Play)





Rob Auton

THE EYES OPEN
AND SHUT SHOW

SAT 5TH APRIL 7.30PM





SAT 12TH APR | Charlie Dore and Julian Littman



SAT 26TH APR | Christine Bovill: Piau To Pop



MON 14TH - THUR 17TH APR | The Little Mermaid



FRI 11TH APR | The Alter Eagles

APRIL 2025

SAT 5TH | 7:30PM

Rob Auton 'The Eyes Open and Shut Show'
(Comedy)

SUN 6TH | 3PM

Wrestleforce

FRI 11TH | 8PM

The Alter Eagles (Tribute Band)

SAT 12TH | 7:30PM

Charlie Dore and Julian Littman (Folk/Music)

SUN 13TH | 11AM AND 2PM

Puss In Boots by **The Let's All Dance Ballet Company** (Dance)

MON 14TH - THUR 17TH | 10AM TO 5PM
(PERFORMANCE ON THUR 17TH | 6PM)

GSYP (Guildford Spring Youth Project):
The Little Mermaid Jr.

SAT 19TH | 7PM

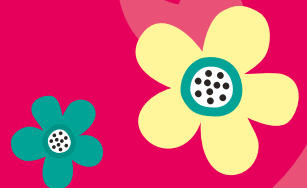
The London Ballet Company (Dance)

SAT 26TH | 7:30PM

Christine Bovill: Piau To Pop (Music)

SUN 27TH

ACM Open Day



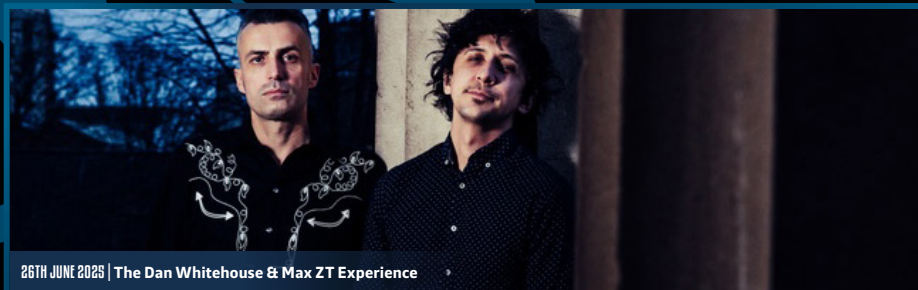
COMING SOON



4TH MAY 2025 | So True: The Spandau Ballet Tribute



9TH MAY 2025 | Thinking Drinkers and Flat and the Curves



26TH JUNE 2025 | The Dan Whitehouse & Max ZT Experience



28TH JULY - 8TH AUG 2025 | Annie Jr / Legally Blonde Jr.

The Electric Theatre

DID YOU KNOW YOU CAN HIRE SPACES AT THE ELECTRIC THEATRE?



- **AUDITORIUM** (pictured) // 210 seats, End-On or Cabaret style
- **THE FARLEY ROOM** // 40 seats, suitable for meetings, teaching rooms, rehearsals or auditions
- **2 X DRESSING ROOMS** (pictured) // 10 seats, suitable for meetings, small rehearsals and auditions
- **CAFE BAR** // 70 seats, children's parties, bring your social club!

For further information
call us on **01483 501 200**
or email enquiries@electric.theatre



WOULD YOU LIKE TO ADVERTISE HERE?

Our brochure goes out to over 10,000 people. Half and full pages are available to advertise your business. For further information email nate@electric.theatre or call 01483 501 200



CONTACT INFO

Box Office: 01483 501 200

Monday to Friday 10am to 5pm
(or until showtime on show days)

Address: Onslow Street, Guildford, GU1 4SZ

For more information check out

WWW.ELECTRIC.THEATRE

or follow us on social media



@ElectricTheatre



@ElectricTheatre



@theelectrictheatreguildford

